

WHICH TYPE OF PRINTER SHOULD I BUY?



Printing is the final stage in creating a document. Since the results you can obtain with different types of printer will vary substantially, here is a guide to help you decide which one is most suitable for your needs.



Dot-matrix printers الطابعات النقطية : use pins to print the dots required to shape a character. They can print text and graphics, however, they produce relatively low resolution output-72 to 180 dots per inch (dpi). They are used to print multi-part forms, self-coping paper and continuous-form labels علامات بطبعة مستمرة.

They are slower than laser printers but much cheaper.



Inkjet printer: الطابعة النافثة للحبر

It operates by projecting small ink droplets onto paper to form the required image.

Color and hues (درجات الألوان) are created by precise mixing of cyan, magenta, yellow and black inks.

Inkjets are fairly fast (سريعة بدرجة مرضية / إلى حد ما), quiet and not as expensive as laser printers.



Laser printers produce output at great speed and with a very high resolution of 1,200-2,400 dpi.

They scan the image with a laser beam and transfer it to paper with a special ink powder called toner. In terms of speed and image quality, laser printers are preferred by experts for various reasons; for instance, they have a wide range of scalable fonts than inkjets, can emulate different language systems, and can produce high-quality graphics; however, they are still expensive for home users.



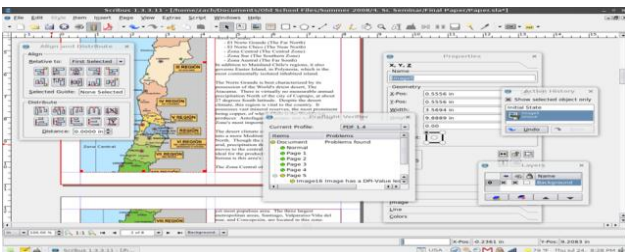
Thermal transfer printers: طابعات النقل الحراري

They are used to produce color images by transferring a wax based ink onto the paper. They are popular for printing bar codes, labels and medium-resolution graphics.



Imagesetters: أجهزة فصل الألوان

They produce very high-resolution output (up to 3,540 dpi) on paper or on the actual film for making the printing plates. In addition, they are extremely fast. Imagesetters are most often used in desktop publishing (DTP) النشر المكتبي.



Although imagesetters produce the highest quality output, they are too expensive for homes for small offices.

In modern lithographic printing **الطباعة الحجرية**, images are created on a DTP and then output directly to the printing plates.

This technology is called computer to plate (CTP) **طباعة من الحاسوب إلى اللوح الطباعي**.



And the machine used is called platesetters.

Finally, we have **الراسمة plotter**.



Plotters use ink and fine pens held in carriage to draw very detailed designs on paper. They are used for construction plans, engineering drawings and other technical illustrations. Nowadays traditional plotters are being replaced with wide-format inkjets.

Exercises

Find the underlined words in the article above with the following meaning:

- Designs and images used in magazines books etc.
- Output quality measured in dots per inch.
- A particular color within the color spectrum سلم الألوان.
- An ink powder used in laser printers and copiers.
- Set of characters that can be resized (enlarged or reduced) without distortion.
- A rectangular pattern of black lines of magnetic ink printed on an object so that its details can be read by a computer system.
- Surface that carries a reproduction of the image, from which the pages are printed.
- In-between / middle

Grammar

Comparatives

- We form the comparative of one-syllable adjectives by adding –er

Example: **slow** → slowerer

Inject printers are slowerer than laser printers, but much cheaperer

- Two –syllable adjectives usually take **more/less**

Example:

Modern → more modern

They are designing a more modern version at the moment.

- **Note:** adjectives ending in y for example (noisy) take –er and the y changes to i.

Dot-matrix printers are noisier than inkjets.

- We form the comparative of adjectives with three or more syllables by adding **more/less**
Versatile → more versatile

..... They are cheaper and more versatile than standalone products

- **Note the irregular forms of**

Good → **better**

Bad → **worse**

little → **less**

If you want better results, you will need specialized software.

- Equality is expressed by using as as.
- Difference can be shown by using not asas.

This is as fast as many other printers in its class.

Injects are not as expensive as laser printers.

exercises

Complete these sentences using the comparative form of the adjective in brackets.

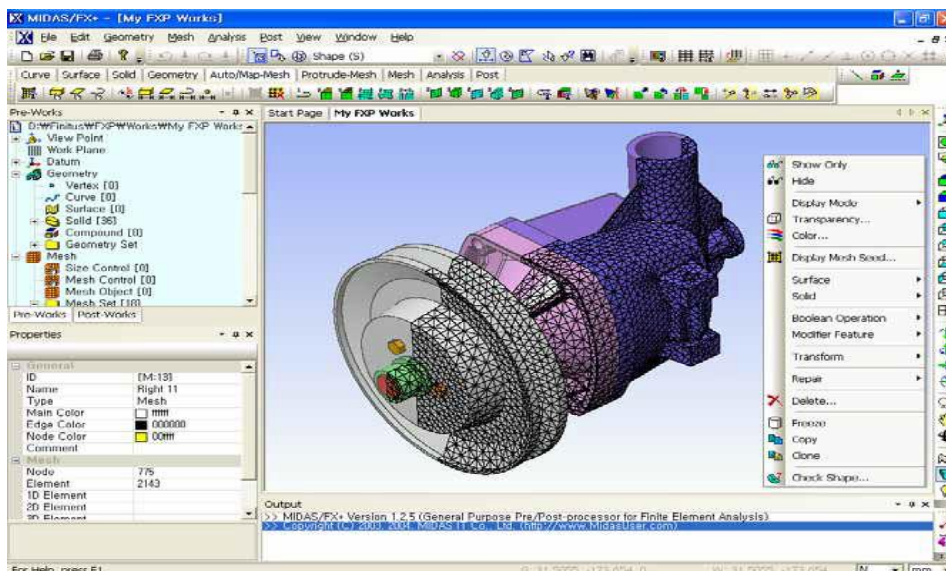
- A laser printer is generally (**quiet**) than a low-cost inkjet printer.
- Multi-function printers are now only slightly (**expensive**) than conventional printers and offer much (**great**) versatility.
- The print quality of this network printer is noticeably (**good**) than any inject, and as (**good**) as similar laser printers.
- The Agfa platesetter is (**reliable**) and (**easy**) to use than most printers of its type.



- Your printer is only as (good) as the paper you use.
- The final result is always (accurate) than the original image.
- An imagesetter is (heavy) than a laser printer.

Choose the most suitable printer for each of these situations:

- You want to print documents, web pages and occasional photographs at home
- A small company needs a printer which will be shared by various users on LAN.....
- A professional team of architects and engineers need to create accurate representations of objects in technical drawings and CAD (computer aided design) تصميم بمساعدة الكمبيوتر.....



- A graphic arts business needs a printer to produce catalogues, brochures and other applications
- Or